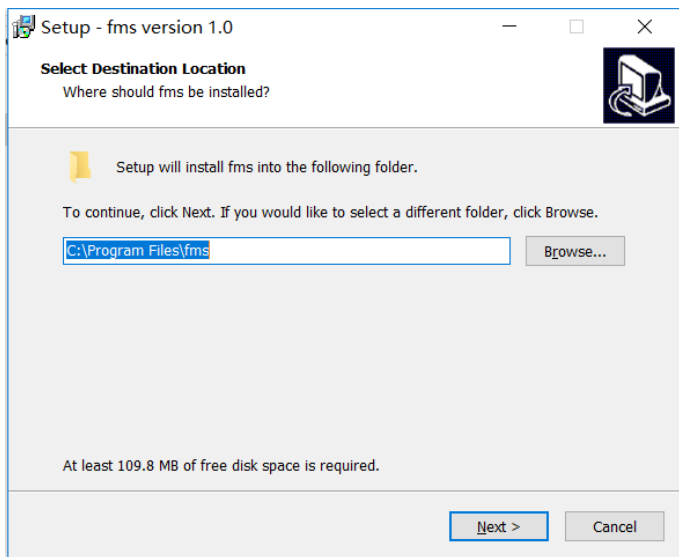


FMS User Guide

Installation

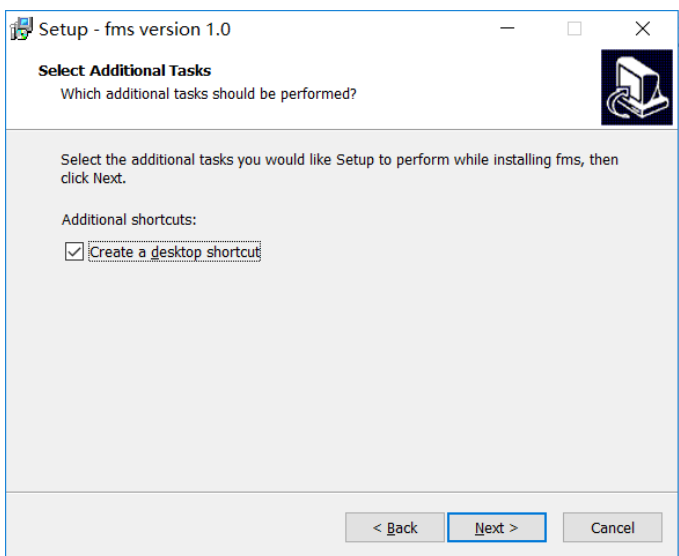
1、 Double click the FMS installation package to start the installation, the following window will be displayed:



The directory to be installed can be selected via the "Browse" button

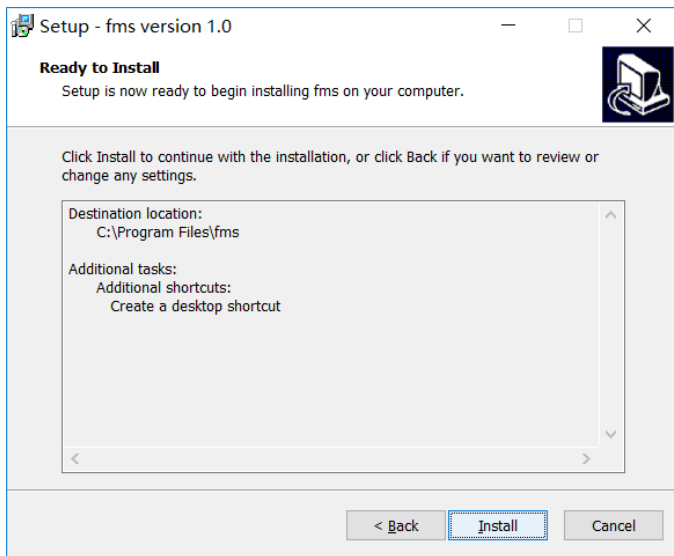
Note: If fms has been installed before, this will automatically uninstall the previously installed program for repeated installation or upgrade installation.

2、 Click the "Next" button to proceed to the next step

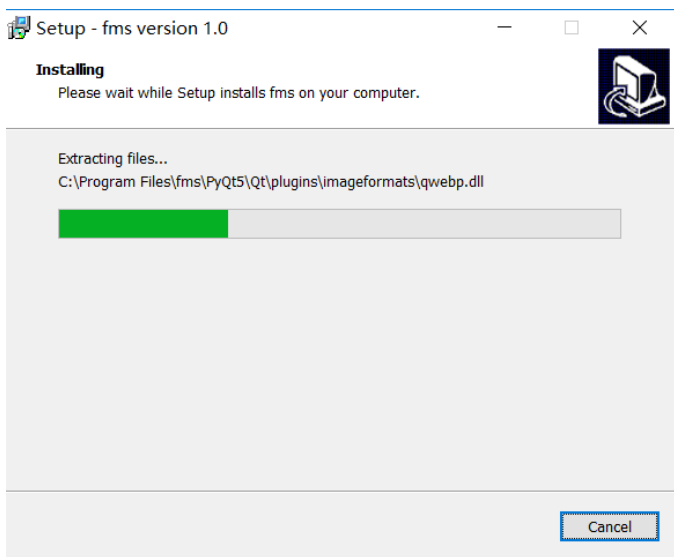


By default, "Create a desktop shortcuts" is checked.

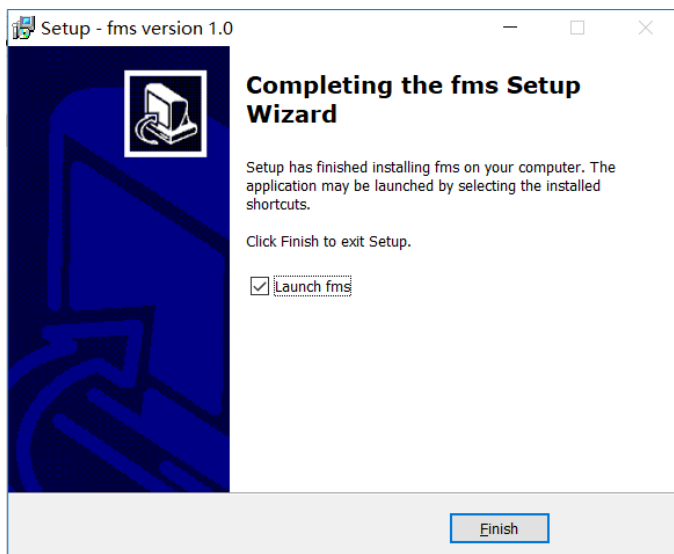
3、 Click the "Next" button to proceed to the next step



4. Click the "Install" button to start the installation



5. After the installation is completed, the following window will be displayed:

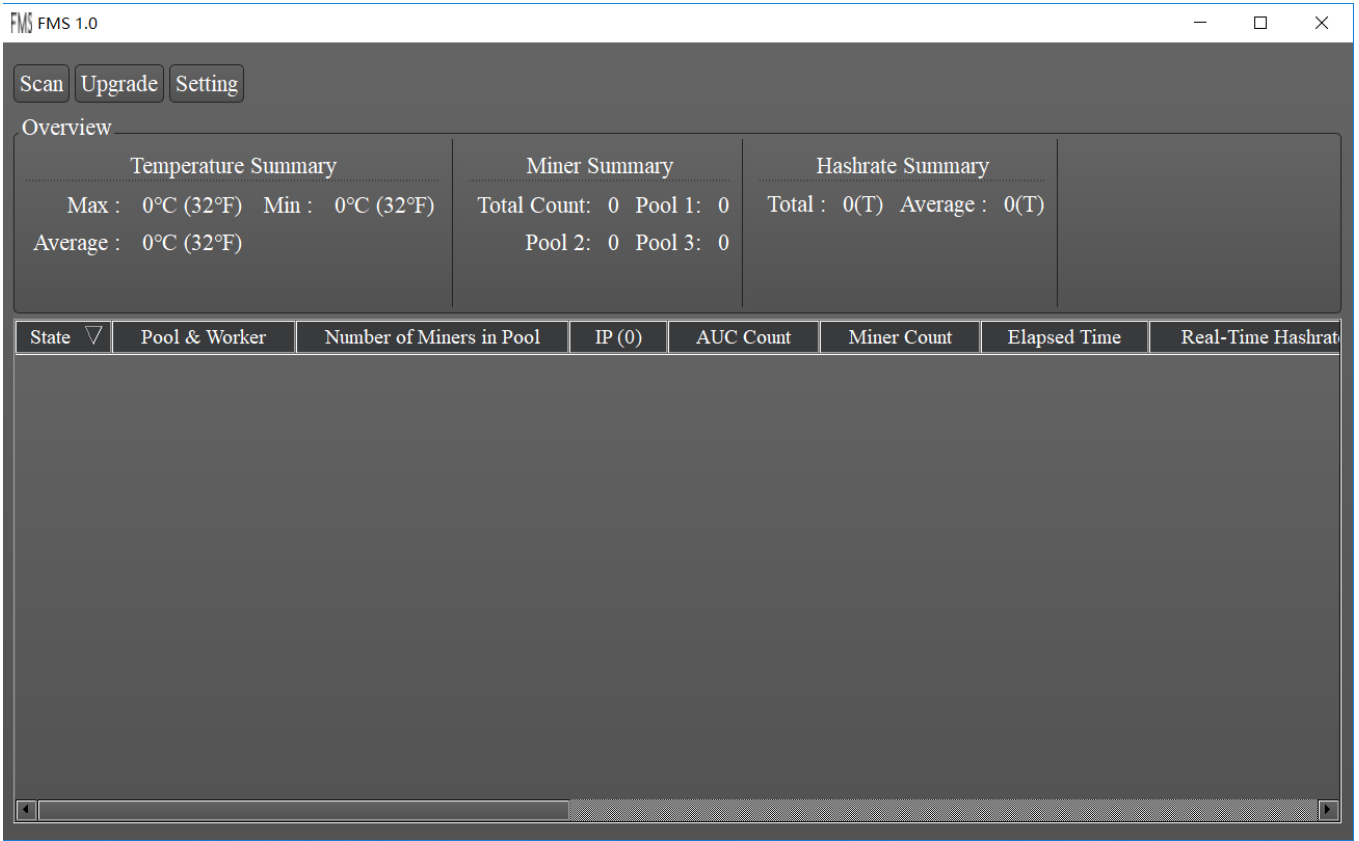


After clicking "Finish" button, close the page to complete the installation of the FMS program.

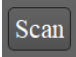
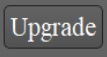
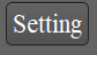
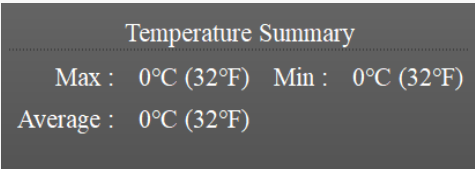
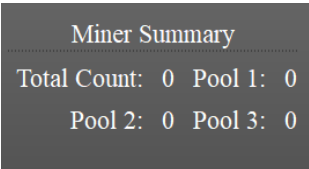
Note: By default, the option "Automatically open FMS after closing" will be checked. When the page is closed, the FMS program will be automatically opened.

User interface introduction & Usage

1、 Double click the FMS shortcut on the desktop or the fms.exe file in the installation directory to enter FMS.



Description of each area :

| Area | Description |
|---|---|
|  | Manually scan the miner once |
|  | firmware upgrade |
|  | FMS IP scanning and warning information setting |
|  | Temperature information summary panel |
|  | Miner information summary panel |
| | |

Hashrate Summary
Total : 0(T) Average : 0(T)

Miner hash rate summary panel

Miner list

| State ▾ | Pool & Worker | Number of Miners in Pool | IP (0) | AUC Count | Miner Count | Elapsed Time | Real-Time Hashrat |
|---------|---------------|--------------------------|--------|-----------|-------------|--------------|-------------------|
|---------|---------------|--------------------------|--------|-----------|-------------|--------------|-------------------|

2、 IP Scanning and Warning Information setting

Click the “Setting” button on the main page of the FMS to enter the IP Scanning and Warning Information page configuration page.

The screenshot shows a window titled "FMS FMS Setting" with a close button and a help icon. It contains two main sections: "Base Config" and "IP Config".

Base Config

- Monitor time interval : minute
- High temperature alarm threshold of ambient temperature :
- Low temperature alarm threshold of ambient temperature :
- Temperature unit: °C °F

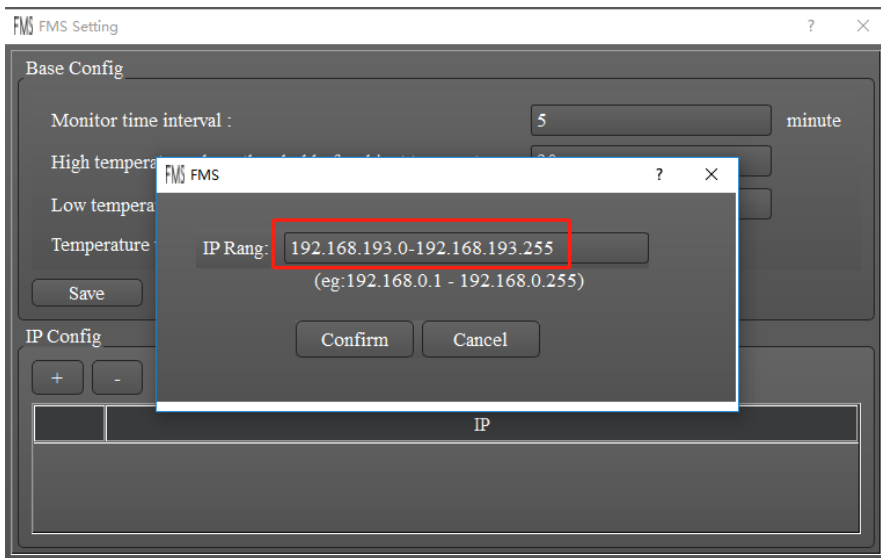
A "Save" button is located below the Base Config section.

IP Config

There are two buttons, "+" and "-", above a table with one column labeled "IP".

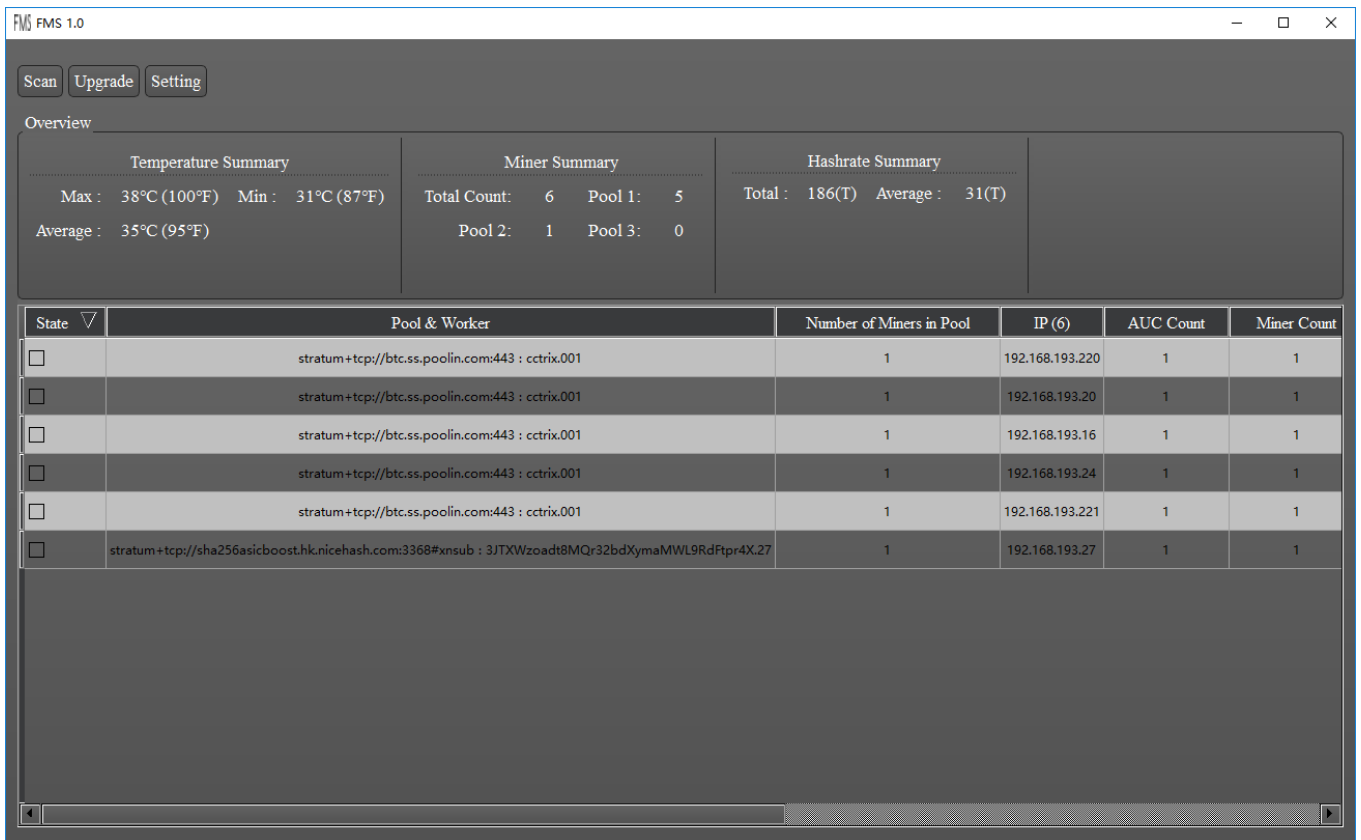
2.1、 Miner Discovery(IP Config)

Click the “+” button under the IP Config panel to pop up the following page for IP configuration.

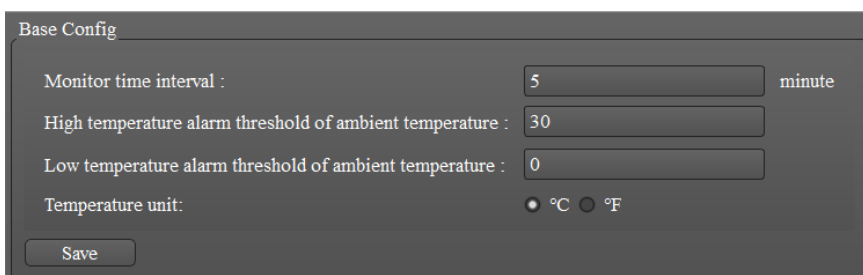


In the IP Rang input box, enter the IP segment you want to scan, for example: 192.168.0.0-192.168.0.255. And then click "Confirm" button to save, Otherwise, if you do not want to save, click the "Cancel" button.

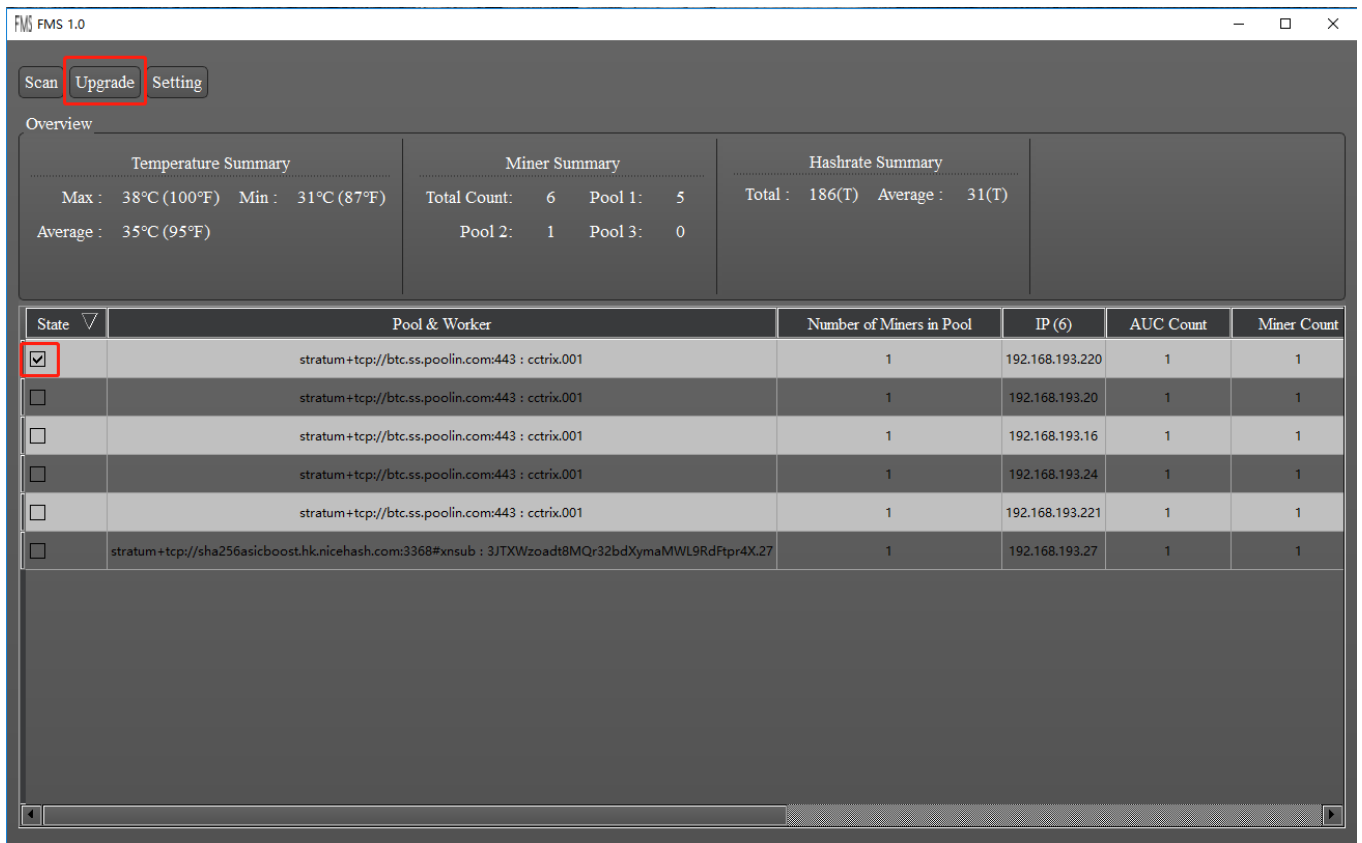
After saving, FMS will scan all the IPs under the IP segment, and then the discovered miner will be displayed in the list of miners on the FMS main page, as shown below.



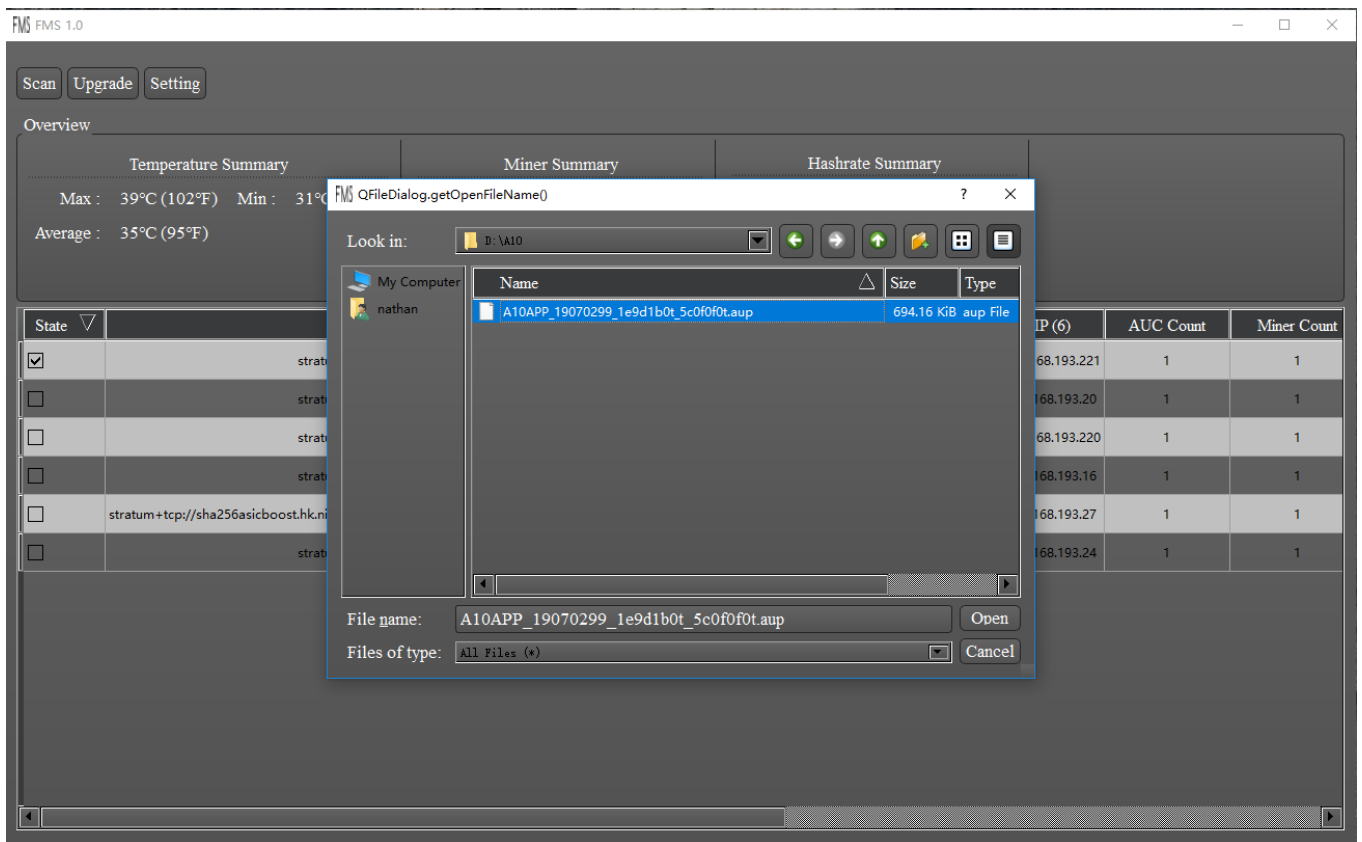
2.2. Warning Information Config



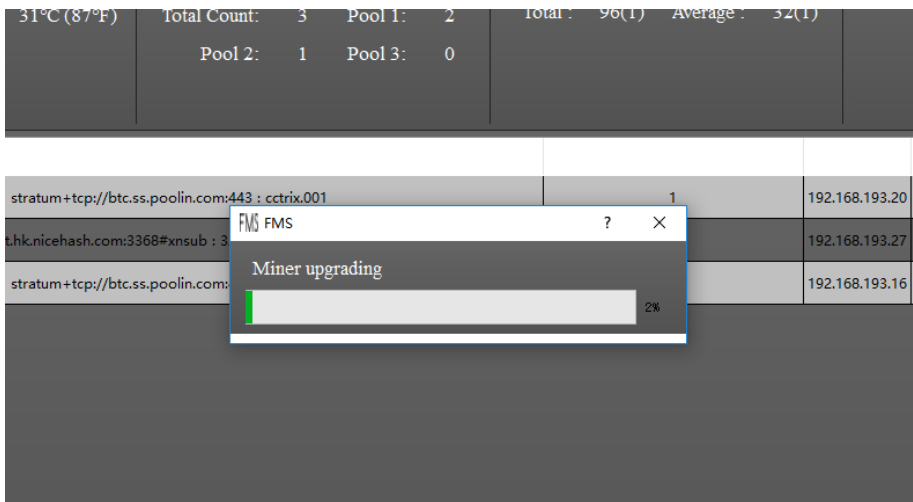
3. Firmware Upgrade



Select the miner to be upgraded in the FMS main window, and click the "Upgrade" button.

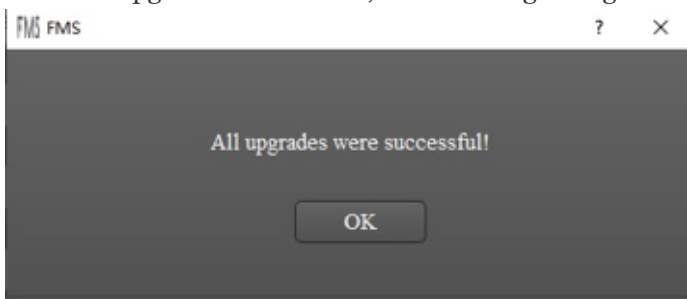


Select the firmware file you want to upgrade , then click the "Open" button to start the firmware upgrade



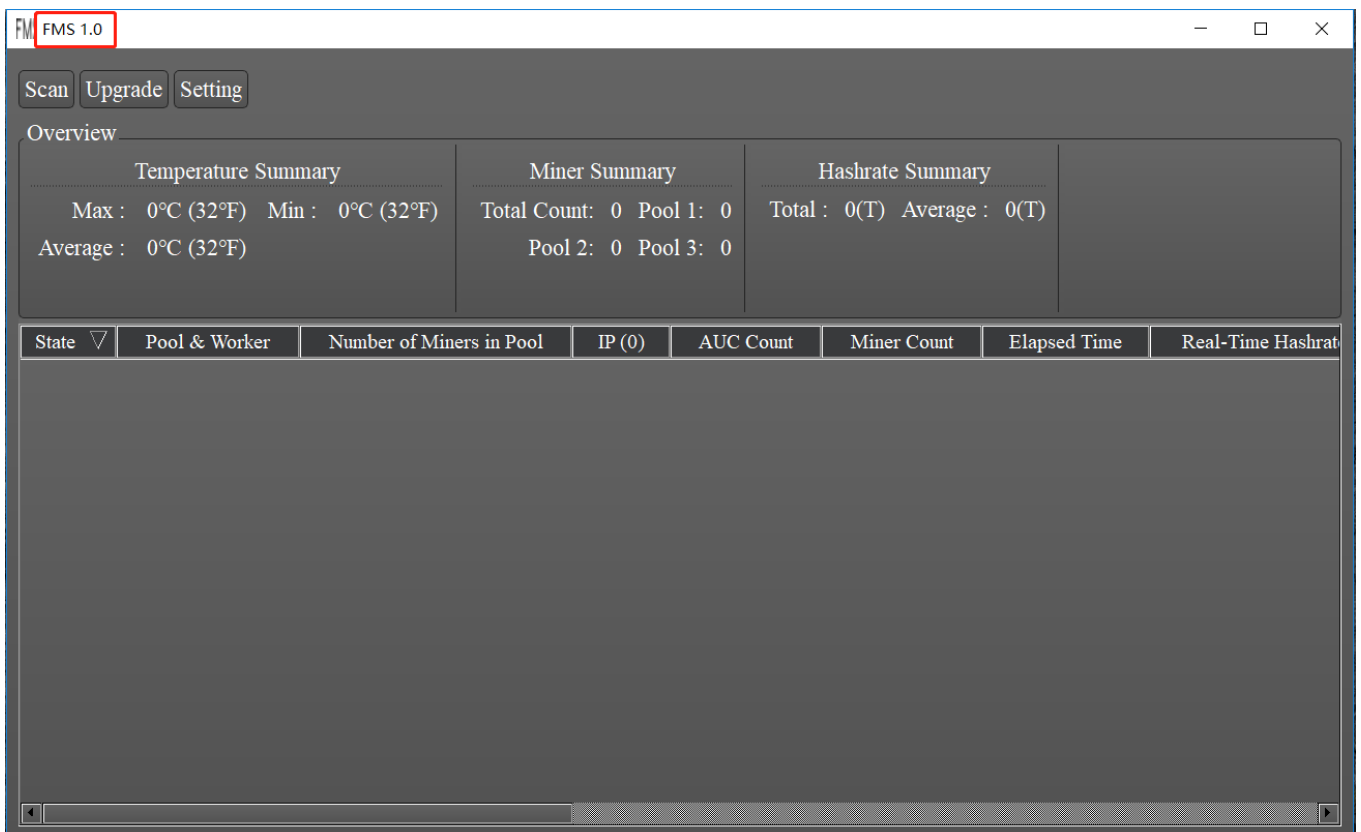
Note: Please do not perform any operation at this time, FMS will automatically perform firmware upload and upgrade operations. Closing the FMS may cause the firmware upgrade to fail. .

After the upgrade is successful, the following dialog will be displayed.



About the FMS version

1、 The current FMS version information will be displayed in the upper left corner of the FMS main window.



2、 From the properties of the fms.exe executable file in the FMS installation directory, you can view it as shown below.

